

From: Martinborough Business Association [mailto:info@martinboroughnz.com]
Sent: Friday, 6 May 2016 11:26 p.m.
To: LTP
Cc: frank@martinboroughholidaypark.com; Conor Kershaw
Subject: Annual Plan feedback from the Martinborough Business Association

To whom it may concern

In response to the Consultation Document, please find attached feedback on the Annual Plan on behalf of the Martinborough Business Association.

The Association currently has 96 members, of which 10 are committee members.

If possible, we would request to speak to this submission on 25 May, either am or pm.

Kind regards

Jane
Secretary

Martinborough Business Association
PO Box 234, Martinborough 5741
email info@martinboroughnz.com
website www.martinboroughnz.com
facebook [martinborough-business-association](https://www.facebook.com/martinborough-business-association)



MARTINBOROUGH
BUSINESS
ASSOCIATION

05 May 2016

Chief Executive Officer
South Wairarapa District Council
Martinborough

Submission on South Wairarapa District Council Annual Plan 2016

We would like to make the following submissions on the Council's Annual Plan:

- We agree the sewerage upgrade should be brought forward by deferring cyclical maintenance (option 2). It seems to be an innovative way of reducing overall cost and more importantly discharging a proportion of waste water to land sooner.
- We support a reduced speed zone around Martinborough School in consultation with the Principal and School Board.
- We would like any additional revenue from water supply to be used to either reduce rates or early repayment of water supply loans; but not for unspecified 'water supply initiatives'.
- We support the cycle strategy as proposed other than in Martinborough town centre. Our town is growing and there is pressure on parking spaces. The cycle strategy makes no mention of the Fire Service and Medical Centre requirements (Ambulance services).
- With regard to the Cycle Strategy document, the order of importance (from highest to lowest is:
 1. Tourism and development (cycle races and events and tourism trails e.g. vineyards)
 2. Development of linkages (routes between destinations e.g. Featherston to Martinborough/Greytown)
 3. Urban amenity (cycling parks, bike racks and support)
 4. Traffic safety (as most cycling is on road a concentration of safer roads for cycling)
 5. Urban cycling (safety and marking routes)
- Consideration should also be given to making the cycle paths suitable for pedestrian traffic to allow walkers to use the path (if there is no suitable footpath). We need to recognise that the most common undertaking of cyclists at present is to visit wineries. As submitted in the LTP (2015) we support the development of a vineyard cycle trail connecting the winery hotspots of Huangarua, Puruatanga and Martins Road safely with the Golf Course and Martinborough centre. The trail will be of

great benefit to local residents and visitors, providing a safe trail for exercise, dog walking and winery tourism.

- Pensioner Housing should be gifted to a CHP (option 3). If possible include a proviso to upgrade the existing stock to include insulation and material repairs to make sure the housing stock is warm, dry and low maintenance for tenants.
- Draft fees and charges – we would always oppose an increase in charges but recognise that costs to provide these services go up.

In addition to these we would like to raise the following:

- There is pressure on parking spaces in the centre of Martinborough including the Square and Kitchener Street. A number of suggestions have been made and we list them here in no particular order:
 - Make one or more diagonal streets one way (Kansas or Texas Streets) so that one side can be used for angle parking.
 - Additional angle parking on the inside of the Square.
 - Parking areas next to the Waihinga Centre, Fire Station or behind the Victory Church could be used for retail workers to park and free up spaces for customers.
 - Encourage business owners and workers to park one or two streets back to free up parking for customers.
 - Restricted time parking in Kitchener Street between Ohio St and the Square.
 - Remove the dashed yellow no-parking zone in Ohio Street to add 4-6 car parks.

It is probably time to undertake a review of parking and the issue of parking and vehicle movement needs to be considered in the Cycling Strategy.

- The bridge closures during winter cause economic losses to business by visitors cancelling or avoiding Martinborough when the bridge is closed. We have started collecting data to work out this economic loss. It needs to be recognised that while the bridge is not the only way to town, better information on road closures and alternative routes needs to be made available.
- Activities during peak tourist periods. When there are applications to close the Square or main roads in Martinborough for an event during an otherwise busy weekend, consideration needs to be given to making sure the purpose for the closure is clearly stated on the day. Also, it may not be necessary or advisable to shut off the whole Square for most of the day when the event could be contained in a smaller area. We received a lot of negative feedback from members about the Square closure on 30 January for Cruise Martinborough. The organisers should have provided better signage indicating what was happening for the whole time the area was closed.



MARTINBOROUGH
BUSINESS
ASSOCIATION

- The Minister of Tourism has mentioned that a Tourism Infrastructure Fund may be set up to help smaller communities cope with the growth in tourism and minimise the negative effects. The pressure on the water, waste and roading in Ngawi and the surrounding area is a good example of tourism growth causing pressure on infrastructure and is great candidate for the type of funding proposed.
- We support the on-going investigations and research into sustainable irrigation projects in the Wairarapa valley and appreciate being kept informed. We ask that the Council, prior to giving consideration to investing in, or publicly expressing support for proceeding with such projects, undertakes independent economic investigations to support objective decision-making, and obtains a clear mandate from the community (which involves well-informed community consultation).
- We strongly support the WAIConnect broadband initiative and will help wherever we can. Faster broadband and greater coverage will improve productivity and make our town a more attractive place to live and do business.
- We support the ongoing funding of Destination Wairarapa. International and domestic tourism is an important contributor to Martinborough community's well-being.
- Please continue to involve the Business Association in consultation on the preparation of Reserves Management & Development Plans (such as the Square Management Plan and Town Hall). Well-developed and managed community facilities are essential to support a vibrant business sector, which relies on a healthy and happy community and visitors to the area.

Thanks for the opportunity to submit. We DO wish to be heard, and we are happy to answer any questions.

Regards

Frank Cornelissen
Chairman, Martinborough Business Association

Submitted on Saturday, 7 May 2016 - 2:40pm Submitted by anonymous user: [163.47.236.45]

Submitted values are:

--Submitter Details--

Name: David and Marion Pawson

Organisation:

--Submission Hearings--

Do you want to speak to your submission? Yes

Speaking preference: May 25th am

--Sewerage--

How would you like to see the sewerage upgrade funded: Loan funded in line with the 2015/25 Long Term Plan

--Roothing--

Are there any streets or roads in the district you think the speed limit should be reviewed?

--Water Supply--

If water supply revenue is in excess should we: Maintain the current rates revenue diverting it where necessary or able to other water supply initiatives

--Cycle Strategy--

Do you support the draft Cycle Strategy? Yes

If not what changes would you like to see?

--Which aspects of the Cycle Strategy are most important to you?--

Please rank from 1-5 with 1 being the most important:

- Urban cycling (safety and marking routes): 4
- Urban amenity (cycling parks, racks and support): 5
- Development of linkages (routes between destinations e.g. Featherston to Martinborough/Greytown): 1
- Traffic safety (as most cycling is on road a concentration of safer roads for cycling): 2
- Tourism and development (cycle races and events and tourism trails e.g. vineyards): 3

Are there any other cycle ways or physical works you would like to see considered in the cycle strategy future works plan?

connect cycle way to local cafes and points of historic interest.

--Pensioner (Community) Housing--

How would you like to see SWDC pensioner housing managed in the future?

--Fees and Charges--

Do you support the draft fees and charges? Yes

If not, why?

--Additional Comment--

If you would like to comment or propose something different now is your chance: See attached file re waste disposal and

Up-Cycling

Upload submission:

<http://www.swdc.govt.nz/sites/default/files/webform/Subm%27nSWDCDraft%20Plan5-16.pdf>

Upload additional information:

The results of this submission may be viewed at:

<http://www.swdc.govt.nz/node/736/submission/585>

Submission to SWDC Draft Plan 1/5/2016

The Waste Disposal Problem

Our property at 234 Bucks Rd is an unofficial tip face, which has consumed considerable Council resources in the last year. We understand that Council officers and Contractors have spent rather a lot of hours liaising with us, developing policy, and formulating a response to our request to attend to this significant gap in Council provisions for sustainable management of the South Wairarapa District. We therefore wish to make a submission to the present draft District Scheme on the subject of waste disposal.

1) The Cost of the Current Situation

1a) What is the cost to SWDC of the time that has been expended on ‘fly tipping’ including the time required to research and liaise with suitable contractors, ‘drone’ assessment of our site, time required for paid staff and contractors to be present for an onsite meeting. There is also of course the unpaid time expended by Councillors and Community Board Members.

1b) What is the cost to SWDC of materials in relation to ‘fly tipping’? Materials such as the provision and replacement of signs, and purchase of security cameras.

1c) What is the predicted cost to SWDC for the removal of the accumulated inorganic rubbish, offal, and garden waste on road reserves throughout the district?

2) Potential For A Better Solution

2a) Naturally we are keen to resolve the ‘fly tipping’ problem beside our own property. However we do not believe that simply moving the problem to a new site elsewhere in the District is a financially acceptable answer, nor the practice of sound Governance.

2b) We submit that the money currently being spent on current waste disposal practices (official and unofficial) would be better spent on a system that makes waste disposal easy and effective for ratepayers, so that it is well used and expresses local people’s pride in the district that they live in.

2c) Modern technological developments including the decreasing cost of security monitoring systems make it possible to extend current services in Featherston in such a way as to provide after-hours availability which can be effectively security monitored to guard against abuse.

2d) A local waste disposal facility could also provide a small amount of part-time paid work for local people, as well as generating opportunities for voluntary work, and ‘pre-employment experience’ that contributes to those all important CV’s for local young people.

3) Alternative Waste Disposal Systems

3a) Coin Operated waste disposal bins are in use in small rural sites such as Tongaporutu, north of New Plymouth. Rubbish is deposited into containers through a trap door, which opens in response to being fed with coins. This facility clearly manages the small amount of waste generated by a local riverside community composed largely of holiday makers. While this has the advantage of providing a 24 hour disposal facility, these facilities are probably too small to effectively address the problem we experience in this area.

3b) Examples from Comparable Communities.

Wanaka in the deep South and Raglan in the Waikato are both examples of successful provincial Community Recycling projects that work. They are both set up with an emphasis on the two important foundations of Financial Viability and Community Education.

It is not necessary for SWDC to spend vast amounts of time and energy researching how such a project would work. Both the Wanaka and Raglan projects make information on their methods available to other communities. Information is already available on subjects such as:

- system design
- staff and volunteer workforce management
- mulch production
- community education
- markets for reuse and resale of waste
- site security

3c) Raglan.

In 2015 we had the opportunity to visit Raglan and were struck by the enthusiasm of local people both for their Recycling Centre, and for 'buying local'. Despite being in town for little more than a flying Friday-night-to-Sunday-afternoon visit, we were constantly asked "Have you been to the Recycling Centre?" We simply had to go!

This facility recycles a wide range of materials. It is the go-to place for:

- clothing
- household goods
- timber
- metal piping, corrugated iron, etc
- tools
- garden mulch

One important limitation of the Raglan situation, we feel, is that everything happens on the one site, which means that the characteristic 'tip aroma' pervades their entire project. From this point of view Featherston's currently separated second hand shop and green waste facilities are already ahead of the game. The addition of another site for building related waste and materials, and a designated site for offal dumping, would translate the demonstrated success at Raglan into our environment.

4) A Solution for Featherston

We submit that this model provides a viable way to turn the current fly-tipping problem around.

Featherston already has an excellent regular rubbish collection within the town boundary. It is the lack of facilities for garden waste, and inorganic waste such as metal, wood and bulky household items which is the problem. There is also a lack of resources for disposing of offal from hunting in the forest park. These are the items that we find tipped onto the road reserve beside our property.

4.1) What would such a project involve?

We submit that there are two issues:

Locally available facilities for:

- bulky household item
- building materials, old tools, timber, and metal
- suitable facilities for disposal of offal

Solving the problem of being both

- **a small District Council with limited resources,**
- **servicing ratepayers who want facilities available dawn to dusk, seven days a week.**

4.2) Countering Abuse with 24 hour Security Cameras

We understand that Council has committed to buying security cameras to install in problem areas, cameras which can be moved to new sites as the problem areas shift. This is a great development! Camera footage provides the necessary evidence to give teeth to a commitment to change the present two-tier system of ‘official waste disposal in Martinborough, unofficial disposal in out of the way areas’.

*However this does not solve the problem of ensuring that waste actually **is deposited in the right place.***

4.3) Extending an Existing Featherston Model of Success.

The successful current operation of the Community Trust Shop for second hand clothing and smaller household goods is a good model of a local waste management and a local recycling project that already works well.

In particular, the entrance is effectively (albeit perhaps unofficially) used as a place for depositing contributions outside shop hours. If this arrangement is not respected from time to time, with the depositing of inappropriate material, no doubt the current staff attend to the mess, and by and large simply include things left on their doorstep in their normal sorting routines when the facility is open.

We appreciate that a crucial part of the problem is the disparity between the limited budget of a small Regional Council and the public expectation of an accessible,

dawn-dusk, rubbish facility. Continuing to fund facilities that are staffed for limited hours is no doubt what is possible financially. Depositing pre-sorted rubbish outside these hours would address public expectations of an accessible service.

4.4) A Security Monitored Drop Off System Outside the Gate for Pre-Sorted Rubbish.

The provision of a defined entrance way at a local waste disposal facility which provides for 'after hours' depositing of material would defuse much of the heat generated by the current arrangement of travelling to Martinborough only to find that it's the wrong day. Or that they didn't stay open until the advertised time of 3pm today.

Monitoring by a well positioned security cameras would ensure that the identity of people abusing the system could be identified and steps to caution and prosecute executed successfully.

4.5) Community Education that Taps In To Local Pride

An accompanying Community Education programme is the key context for effective use of separated bins and marked areas for pre-sorted recyclables and bags of general rubbish. Staff would attend to pre-sorted the bins of recyclable glass, plastics, etc, and rubbish bags deposited after hours, along with the rubbish that arrives during their regular working hours. Any increase in wages for staff would be more than off-set by the savings generated by the end of costly clean-ups in inaccessible outlying parts of the District.

Engaging key local people in the design of the facility would begin the process of community engagement, local pride, and Council reputation-building, right from the start. 'Good things take time' as Mainland Cheese advertising famously reminded the whole country. However, to design such a project with input from an appropriate Technology Class at Kuranui College, or an assignment produced by a Tertiary student from the Wairarapa District (perhaps someone who has been the recipient of a Community Licenseing Trust Tertiary Scholarship studying Geography, Architecture, or Resource Management), to pluck examples out of thin air, would begin the community education side of a up-cycling project right from the outset.

4.6) Addressing the Problem of Bulky Items of Rubbish

Larger items suitable for upcycling would be dealt with at a upcycling shop elsewhere in Featherston specialising in building materials and larger household items. This type of facility would turn waste into reusable resources and income for SWDC. A suitable premise might perhaps be the building and attached yard on the corner of Revans Street, which currently houses a Wartime Exhibition worthy of exposure in the main street.

New regulations under the WorkSafe Guidelines require that cement-based products be cut within contained areas. This is potentially a real draw card for a building materials upcycling service. The first facility to provide community access to

containment for cutting part sheets of gib board will certainly attract positive attention. Up-cycling tools and other building materials would be a natural addition.

4.7) Social Benefits for Law and Order

Like Featherston, Raglan is composed of a mixture of citizens from the 'have's', to the 'greenies, to the 'have nots'. However in Raglan the social benefit of being a community that recycles was obvious. Recycling provides a mechanism where people with different resources and values share resources, within a context of pride in their region.

In a mixed community antagonism is liable to be generated where those who have 'made it' live in proximity to people who feel disenfranchised as the result of generations of 'benefit lifestyle'.

The availability of shoes, swimming togs and jackets for 50 cents, as well as the recycling of building materials and the availability of ready-to-go garden mulch enables a wider range of citizens to be provided for and included in the services available in Raglan.

Taking on being a 'upcycling town' as part of the Featherston identity has the power to defuse this issue here too. It is not drawing too long a bow in our view to see that the provision of accessible waste facilities within an up-cycling identity would contribute to the maintenance of law and order. Certainly in the outlying part of the district where we live, we know at first hand that replacing 'fly tipping' with accessible waste disposal will have a traceable connection to concerns with 'under-policing' and vigilante responses.

5) Conclusion

We submit that the cost of the present waste management practices wastes money and generates frustration for ratepayers.

In our view it is time for SWDC to extend and develop local, cost-effective, waste and up-cycling facilities in Featherston. A campaign to harness local pride in the District together with extended local rubbish, green waste, and upcycling facilities in Featherston would:

- Replace fly-tipping with after-hours deposits of pre-sorted rubbish deposited in the right place
- agreeably impact Council's balance sheet (and Council's reputation)
- potentially provide a source of income to SWDC
- provide a comprehensive service to ratepayers
- harness the enthusiasm local people often express for living in Featherston
- contribute to both voluntary and paid employment
- utilise community pride to assist in the regulation of law and order
- contribute to Featherston's development of its distinct identity.

Submitted on Saturday, 7 May 2016 - 9:05pm Submitted by anonymous user: [202.174.164.133]

Submitted values are:

--Submitter Details--

Name: Lynly Selby-Neal

Organisation:

--Submission Hearings--

Do you want to speak to your submission? No

Speaking preference:

--Sewerage--

How would you like to see the sewerage upgrade funded: Defer cyclical maintenance to accelerate stage one of irrigation to land for Martinborough and Greytown by June 2017

--Roading--

Are there any streets or roads in the district you think the speed limit should be reviewed?

--Water Supply--

If water supply revenue is in excess should we: Maintain the current rates revenue diverting it where necessary or able to other water supply initiatives

--Cycle Strategy--

Do you support the draft Cycle Strategy? Yes

If not what changes would you like to see?

--Which aspects of the Cycle Strategy are most important to you?--

Please rank from 1-5 with 1 being the most important:

- Urban cycling (safety and marking routes): 1

- Urban amenity (cycling parks, racks and support): 3

- Development of linkages (routes between destinations e.g. Featherston to Martinborough/Greytown): 5

- Traffic safety (as most cycling is on road a concentration of safer roads for cycling): 2

- Tourism and development (cycle races and events and tourism trails e.g. vineyards): 4

Are there any other cycle ways or physical works you would like to see considered in the cycle strategy future works plan?

--Pensioner (Community) Housing--

How would you like to see SWDC pensioner housing managed in the

future? Sell those units (where able) to community housing provider

--Fees and Charges--

Do you support the draft fees and charges? Yes

If not, why?

--Additional Comment--

If you would like to comment or propose something different now is your chance:

Upload submission:

<http://www.swdc.govt.nz/sites/default/files/webform/T%C4%93n%C4%81%20koutou%20katoa%20-%20submission.docx>

Upload additional information:

The results of this submission may be viewed at:

<http://www.swdc.govt.nz/node/736/submission/586>

Tēnā koutou katoa,

I recently hosted a drop-in session for children at the 2016 [Wairarapa Kidz Conference](#), where attendees were invited to express ideas for future conferences, new clubs and public spaces in the Wairarapa. [Learn-Now](#) held the conference for children in years 4 – 7 at school. I volunteered to host this session to both collate ideas and to show the children how they could submit ideas to council for consideration. This submission is a summary of the ideas generated when asked what they would do with a vacant lot or a street closure setting and will be submitted to all three councils on behalf of the children who participated. While the ideas may be better suited to applications for community grants or the likes, the opportunity to submit to the Annual Plan provided a timely means to complete the process for the children.

When asked what they would do with a vacant lot or a street closure setting, the children suggested:

- a space in Masterton for food carts to sell diverse foods, to daytime workers in the CBD and for families and visitors at night,
- a night market selling international food in Featherston,
- a kart derby, extended to include all types of wheels, from toddlers on kick bikes to homemade carts. This was suggested by children from Kahutara School who would like to see funds raised put towards enhancing the Featherston Pool and facilities,
- an artificial turf to host sports, such as a cricket match (with a soft ball) attended by a Black Cap, to promote cricket in the region and raise funds to purchase cricket equipment,
- an interactive water park,
- climbing walls,
- social reading and Wi-Fi spaces with colourful beanbags and furniture, able to be moved around to suit your group, or for quite time on your own, and
- a large screen or projection of movies or significant events, e.g. Olympics, sporting finals.

These ideas are 'pop-up' in nature and I expect would be low budget and low impact, but high participation and fun!

This workshop session showed that children are willing to participate in planning and consultation given the right forum to do so. I encourage the Council to participate in future Kidz Conferences and to go out to the children and seek their input on all community development projects. If the council would like additional information on the workshop or ways to engage children in community planning, I am happy to be contacted to discuss this.

“Young people are also great entrepreneurs and can be extremely resourceful. Not to mention they are our towns’ future community builders, business owners, public servants, and families. As community leaders we must engage the whole community, and by engaging young people we send the message that they are a part of our community too. Working with young people creates stewardship, ownership, respect and a great sense of pride in our communities. Involvement of young people in your community could really influence future town planners and community leaders.” Millard, C. 2015 <http://www.pps.org/blog/young-people-and-placemaking-engaging-youth-to-create-community-places/>

Nga mihi nui,

Lynly Selby-Neal

lynlys@hotmail.com

Submitted on Sunday, 8 May 2016 - 7:38pm Submitted by anonymous user: [192.206.154.2]
Submitted values are:

--Submitter Details--

Name: Jennie Marks

--Submission Hearings--

Do you want to speak to your submission? No

Speaking preference:

--Sewerage--

How would you like to see the sewerage upgrade funded: Loan funded in line with the 2015/25 Long Term Plan

--Roading--

Are there any streets or roads in the district you think the speed limit should be reviewed?

--Water Supply--

If water supply revenue is in excess should we: Maintain the current rates revenue diverting it where necessary or able to other water supply initiatives

--Cycle Strategy--

Do you support the draft Cycle Strategy? Yes

If not what changes would you like to see?

--Which aspects of the Cycle Strategy are most important to you?--

Please rank from 1-5 with 1 being the most important:

- Urban cycling (safety and marking routes): 1

- Urban amenity (cycling parks, racks and support): 4

- Development of linkages (routes between destinations e.g.

Featherston to Martinborough/Greytown): 1

- Traffic safety (as most cycling is on road a concentration of safer roads for cycling): 2

- Tourism and development (cycle races and events and tourism trails e.g. vineyards): 3

Are there any other cycle ways or physical works you would like to see considered in the cycle strategy future works plan?

Prioritise cycleway on key routes to schools and to railway

station. Consider off-road/shared pedestrian cycleways where kids need to bike (schools, skatepark, pools, sports fields)

--Pensioner (Community) Housing--

How would you like to see SWDC pensioner housing managed in the future? Transfer management of pensioner housing units to a community housing provider management company (if available)

--Fees and Charges--

Do you support the draft fees and charges? Yes

If not, why?

--Additional Comment--

If you would like to comment or propose something different now

is your chance: please refer to my letter attached

Upload submission:

<http://www.swdc.govt.nz/sites/default/files/webform/J%20Marks%20Submission%20on%20SWDC%20annual%20plan%2016-17.docx>

Upload additional information:

The results of this submission may be viewed at:

<http://www.swdc.govt.nz/node/736/submission/587>

South Wairarapa District Council
 19 Kitchener Street
 Martinborough 5711
 PO Box 6, Martinborough 5741

Jennie Marks

VIA ONLINE SUBMISSION PORTAL

8 May 2016

Dear South Wairarapa District Council

Submission on Annual Plan 2016/2017

Thank you for the opportunity to submit on the Annual Plan through the online portal. This letter forms an attachment to the online form in which I selected my preferences in your targeted consultation document. I would like to take the opportunity to suggest a few other things that were not part of the set form. I keep my suggestions quite minor and pragmatic, as I appreciate the Council working to service the district with modest resources.

Footpaths to ensure safety of pedestrian, especially children

Footpaths are an important part of the urban infrastructure in Featherston. Unfortunately, some of the most commonly used routes by families and children do not have footpaths. As you are developing and upgrading footpaths, please take a strategic approach in helping to provide safety for pedestrian and cyclists. The intersections around the playground and skatepark are particularly unsafe. Not only aren't safe crossings provided, there aren't any footpaths linking the skatepark – and therefore kids on wheels – with the rest of town. Please improve this area with utmost urgency followed by strategically linking the schools, library, medical centre, sports facilities, train station, supermarket etc – basically mapping out where pedestrians are likely to need to walk to and focussing on these areas first.

Connecting urban elements to allow community connection and flow

In line with the point above, I would like to see that any new elements developed in the town connect to existing features (currently old footpath and verges are going to no-where). The new "town-square" development provides an opportunity to connect facilities better to improve the foot traffic flow and safety of pedestrians.

I welcome the new developments around cycle paths for people going doing the Rimutaka Rail Trail and perhaps eventually the coastal track etc. I would like to see more of these developments to the point visitors feel compelled to spend the night in Featherston as they would like to undertake several routes. This would stimulate the local economy in terms of increasing the need to provide associated hospitality. I believe a prime opportunity would be to open up the pylon track past through Boar Bush Gully so that people could ride from Kaitoke to Featherston and back. Another priority would be a track between Featherston and Greytown from Underhill Road across the Tauherenikau.

Maintaining and improving recreation and sports facilities

Speaking of recreation: Please, help facilitate the better and more holistic management of Featherston's recreational facilities. Opportunities to exercise and connect through sports in an important part of community and underpins the wellbeing of our town in regards to connectedness and health. The sports fields and each of the affiliated clubs (Rugby, soccer, athletics, gymnastics, tennis), indoor facility, and the pool are managed med separately. By combining the administration and management of these assets, efficiencies can be gained and the energy and focus is less on retaining members but to encourage our kids and wider community to take part in sports, without worrying which it is.

The swimming pool is a wonderful asset to the Featherston community. I believe that this facility could be turned into a place where people enjoy spending time with their family and friends on a hot day if the area was enhanced with some planting along the fence (noting like standing in a bikini behind barbed wire staring at the recycling station...) and some more tables. It would be fantastic if you could also trial having the pool open for longer on some weekdays in the hot months so commuters could take a dip after coming in on the train.

Thank for considering my submission. I look forward to see Featherston continue to imprve and provide good facilities for hard-working, growing communities.

Sincerely

Jennie Marks



PO Box 157, Featherston, 5740

Email: info@featherstoncampsculpture.org

Website: www.featherstoncampsculpture.org

Secretary: Jean McDowall

Please address all correspondence to the Secretary

**SOUTH WAIRARAPA DISTRICT COUNCIL
SUBMISSION TO ANNUAL PLAN 2016 - 2017**

To: The Mayor and Councillors, South Wairarapa District Council
Copy to: Paul Crimp, Chief Executive Officer, South Wairarapa District Council
 Featherston Community Board
From: Featherston Camp Memorial Trust
Date: 9 May 2016

As the Council is aware, the aim of the Featherston Camp Memorial Trust (FCMT) is to create a memorial sculpture to the Featherston Military Training Camp, to be installed in Featherston's town square. The Memorial is to be in place for Armistice Day 2018.

The Trust has commissioned internationally renowned New Zealand artist Paul Dibble to design an artwork for Featherston to complement his 'Southern Stand' sculpture, the New Zealand War Memorial in Hyde Park, London.

In July 2014 the South Wairarapa District Council agreed to provide land for the sculpture and resource consent has since been granted to erect it in the proposed town square. The Trust is now requesting that the District Council funds:

- the groundworks and power (to run the up lighting) for the installation of the memorial and,
- the ongoing annual maintenance of the memorial once installed.

The estimate for the groundworks and installation (provided by City Care in early 2015) is \$37265. The cost of the ongoing maintenance of the memorial and site will be similar to that for the maintenance of the nearby Wind Grass sculpture (c\$5000pa).

With respect, the FCMT submits that a budgetary allowance of \$45000 be made in the SWDC 2016-17 Annual Plan for these items.

The project was launched on 25 January 2016 with a fundraising regimental lunch in the Anzac Hall. The lunch was attended by 130 people including Maggie Barry, Minister for Arts Culture and Heritage; General Sir Peter Kelly, Chief of the Army, the Mayor of SWDC, Adrienne Staples, Paul Dibble and representatives of the NZ Mounted Rifles Charitable Trust (from Canterbury). Tim Shoebridge, historian, provided the principal speech.

To date FCMT has raised over \$80000 towards the total cost of the project of approximately \$656,000. The Featherston Camp Memorial is an approved WW100 project and as such is listed on the WW100 website. The Trust will apply for a WW100 Lotteries Grant for the

bulk of the funding once one third of the total cost (at least \$198,000) has been raised. The Lotteries Grant Board is able to fund up to two thirds of the total cost of a WW100 project.

Featherston's greatest asset is its history, an asset that is under-utilised in terms of community pride and economic benefit. There is no other place in New Zealand with such a unique past and connection to the New Zealand soldiers of World War I.

The Trust views the installation of this artwork as an opportunity for public education about New Zealand's role in that war and how the impact of war can insinuate its way into the day to day lives of people. It will also be a 'trigger' for other educational activities about war and peace, social and cultural history.

More information is provided in the FCM Trust Feasibility Study (January 2016), a copy of which has been provided to SWDC

We also ask that the Council hears us in person about this proposal within its Annual Plan process.

**David Kernohan MNZM
Chair FCMT**

**Jean McDowall
Secretary FCMT**

Submitted on Monday, 9 May 2016 - 8:50am Submitted by anonymous user: [101.98.159.123]

Submitted values are:

--Submitter Details--

Name: Keith Banks

--Submission Hearings--

Do you want to speak to your submission? No

Speaking preference:

--Sewerage--

How would you like to see the sewerage upgrade funded:

--Roading--

Are there any streets or roads in the district you think the speed limit should be reviewed?

--Water Supply--

If water supply revenue is in excess should we:

--Cycle Strategy--

Do you support the draft Cycle Strategy?

If not what changes would you like to see?

--Which aspects of the Cycle Strategy are most important to you?--

Please rank from 1-5 with 1 being the most important:

- Urban cycling (safety and marking routes):

- Urban amenity (cycling parks, racks and support):

- Development of linkages (routes between destinations e.g. Featherston to Martinborough/Greytown):

- Traffic safety (as most cycling is on road a concentration of safer roads for cycling):

- Tourism and development (cycle races and events and tourism trails e.g. vineyards):

Are there any other cycle ways or physical works you would like to see considered in the cycle strategy future works plan?

--Pensioner (Community) Housing--

How would you like to see SWDC pensioner housing managed in the future?

--Fees and Charges--

Do you support the draft fees and charges?

If not, why?

--Additional Comment--

If you would like to comment or propose something different now is your chance: We live on Cape Palliser Rd and are the only permanent resident with gravel in front of our house. This last summer has been horrendous with the amount of traffic passing our house and the hot dry weather has caused an enormous amount of dust. We have been unable to open doors and windows due to the dust. The traffic problem is only going to get worse so we would like to see the road sealed from Ngawi to past our house to reduce dust as this is becoming a health hazard. The distance we are asking for is only 200 metres.

Upload submission:

Upload additional information:

The results of this submission may be viewed at:

<http://www.swdc.govt.nz/node/736/submission/588>

Submission to Draft Annual Plan 2016-17 South Wairarapa District Council

Name: Enviroschools Te Upoko o te Ika a Māui **Contact Person:** Karyn Burgess

Postal Address: GWRC, PO Box 11646, Wellington **Email:** Karyn.burgess@gw.govt.nz

Physical Address: GWRC, Shed 39, 2 Fryatt Quay, Pipitea, Wellington **Phone:** 021 133 2569

We would like to speak to this submission.

A single Wairarapa Enviroschools contract

This submission acknowledges South Wairarapa District Council's ongoing support for Enviroschools and requests that support for Enviroschools in the Wairarapa be brought into a single Wairarapa-wide contract.

Enviroschools' core values, vision and mission directly relate to the Wairarapa Environment and Sustainability Strategic Plan. The Programme can assist councils achieve consent compliance requirements such as water conservation (water take consents) and contaminated site communications, as well as general community development outcomes.

All three Wairarapa councils have been supporting the Enviroschools programme for a number of years. Currently Enviroschools receives funding from each of the three Wairarapa councils separately each year, with limited staff oversight of the relationship.

We are confident that a single contract would:

- acknowledge the extent to which the Enviroschools Network in each part of the Wairarapa contributes to, builds on and influences those in the other parts of the Wairarapa
- improve the partnership between the councils and Enviroschools,
- increase transparency and oversight by means of a single council point of contact, and
- refine reporting and consistency across the Wairarapa.

St Mary's students paint messages on their drains to alert users that what goes down there will go straight into our waterways.



Instead of the three separate funding arrangements, the same amount could be managed by a single source. The Environment and Sustainability Officer is supportive of this type of arrangement and the contract would be a natural fit within that budget. If, however, the cross-council Environment and Sustainability Officer position is not continued, we request that a cross-Wairarapa contract still be considered.

Contribution from South Wairarapa District Council

Current per annum contributions ex GST:

- South Wairarapa District Council \$10,000 pa in LTP

Progress with Kuranui College

Recently Kuranui College has shown a high level of interest in becoming part of the Enviroschools Programme. The college is responding to the fact that a large number of the students coming to the school at Year Nine level have previously been attending Enviroschools. These students are showing a high level of environmental and sustainability consciousness and the school wants to be able to address their needs and interests.

This provides us with an exciting opportunity to work with Kuranui College to develop opportunities for their students within their school programmes, provide leadership roles in local environmental and sustainability projects and to connect with other schools around the country taking a similar approach.

This kind of interest from a secondary school is ground breaking in our region and provides a real opportunity for South Wairarapa to stand out by providing a regional model.

We therefore request that South Wairarapa District Council increase their contribution to the Enviroschools Programme \$11,000 pa. This would be a good fit with the regional funding model and would allow Enviroschools to take advantage of the opportunity for Kuranui College to join the Programme.

Attached:

2015 Calendar Year Report

2015-16 Financial Year Budget

Carterton and South Wairarapa Council Enviroschools Contracts

Budget Information: 2015-16 Financial Year

Income:

SWDC	\$10,000
CDC	\$ 5,500
Potential Regional Top Up	<u>\$ 3,740</u>
	<u>\$ 19,240</u>

Spending		Spending for 2015/16 year as at 30 April 2016	Expected \$ cost for financial year	Percentage of total cost
Internal coordination		2,541	3,040	16%
Contribution to programme development		1,544	2,300	12%
Network Development	Coordination	2,305	2,851	64%
	Opportunities for Teachers (PLD + Networking)	800	1,500	
	Network Opportunities for Students	0	0	
	Enviroschools Programme support for individual schools	3,993	7,936	
Travel (hours at ½ hourly rate + mileage reimbursement)		880	1,413	7%
Expenses		133	200	1%
TOTAL		12,196	19,240	100%

Enviroschools End of Year Report 2015 Calendar Year – Carterton and South Wairarapa District Councils



Aim: To grow a network of schools and early childhood centres committed to sustainability.

Summary of Network Participation

Participation	Schools		
Registered Enviroschools - receiving in-depth support on an on-going sustainability journey	9 schools (60 %) Representing 1185 students and their families	Carterton School Gladstone School South End School St Mary's School	Featherston School Greytown School Pirinoa School South Featherston School Tukurumuri School
Registered Friends of Enviroschools Wellington and other schools utilising the network - have been involved in Enviroschools events in the past financial year eg.	3 schools (20%)		St Teresa's School Martinborough School Kuranui College
Total Reach	12 schools (80%) Not connected to the network at this stage: 3 schools		

Summary of Network Activity:

<i>PLD Events/ provided</i>	<i>Date held</i>	<i>No. of Ctn and Sth Wai teachers attending</i>	<i>No. of Ctn and Sth Wai schools represented</i>
Exploring Enviroschools Teacher Forum	7 May 2015	3	3
Healthy Water Teacher Forum	6 Aug 2015	4	4
Global Issues Teacher PLD	21 May 2015	3	3

Individual Enviroschools	Key Areas of Sustainability Learning or Action Taken During the Year	Stage of Holistic Reflection
Carterton School	Whole school environmental science focus on water resulting in planting at Daleton Wetland and trout hatching and release.	Silver
Gladstone School	Waste audit - 60% of waste going to landfill was organic waste. Students have taken action by putting out pig buckets to reduce the waste going to landfill.	Silver Preparing to reflect at Green- Gold
Greytown School	Matariki Garden development, planned by the students and finished with help from parents.	Green-Gold
South End school	Whole school focus on reducing waste with the aim to be a zero waste school in 2016. Mini waste audits were carried out in each classroom tied in with a healthy eating option. Weekly lunch orders now come in paper bags rather than plastic bags.	Bronze
St Mary's School	Focus on waste for years 1 to 3 and a trip to the recycling station in Masterton Junior School painting messages around drains to prevent stormwater pollution.	Bronze
Pirinoa School	Technology unit researching alternatives to protect the gardens from pests and birds. This resulted in Science Fair projects.	Bronze
South Featherston School	Started this year as an Enviroschool. Considered initial steps to improve the school environment.	

Featherston School	Development of the vegetable garden Wairarapa Moana Hikoi connecting students with the stories and important places around the lake	Bronze
--------------------	---	--------

Media representation

Access Radio Talking the Walk interviews:

- *DHB interview Gill Stewart about her work with Enviroschools, early 2015*
- *Carterton Connections - Gill Stewart and Esther Dijkstra spoke about Enviroschools, March 2015*

Submission to Draft Annual Term Plan South Wairarapa District Council 2016/17

Name: Toimata Foundation **Contact person:** Kristen Price, Operations Manager

Postal Address: PO Box 4445, Hamilton, 3247 **Physical Address:** Lockwood House, 293 Grey Street, Hamilton

Phone: 07 959 7321 **Email:** kristen.price@toimata.org.nz We do NOT wish to speak to this submission

Recognising your support for the Enviroschools Programme

We would like to acknowledge South Wairarapa District Council (SWDC) for supporting young people in your district to be part of the Enviroschools network since 2006.

The Enviroschools Programme is a nationwide action-based education programme where young people plan, design and implement sustainability projects and become catalysts for change in their communities. Enviroschools was originally developed in the late 1990's by councils in Waikato as a non-regulatory tool and has now been adopted by 58 councils, including most of the larger councils and 74% of the total sector.

The programme is managed nationally by Toimata Foundation (a charitable trust). Toimata Foundation has funding from Central Government through the Ministry for the Environment and also works closely with the Department of Conservation. Regional implementation of Enviroschools is through partnerships with Local Government and other community agencies. This multi-sector collaboration supports over 1,000 schools and early childhood education (ECE) centres to be involved in Enviroschools – representing 31% of the school sector and 5% of the large early childhood sector.

Most schools in South Wairarapa are connecting in some way with the Enviroschools Network. Five of those have made a commitment to an ongoing journey with the Enviroschools programme, part of a wider network of 84 in the Wellington region. Regionally 25% of all schools and 3.9% of all early childhood centres are registered Enviroschools and many others connect with the network through teacher professional learning development or student events.

This submission encourages SWDC to maintain its involvement in Enviroschools along with the other regional partner agencies – the Greater Wellington Regional Council, Wellington, Hutt, Upper Hutt and Porirua City Councils, Kāpiti, Masterton, and Carterton District Councils, as well as Lands Trust Masterton, Whānau Manaaki Kindergartens and Hutt Kindergarten Association.

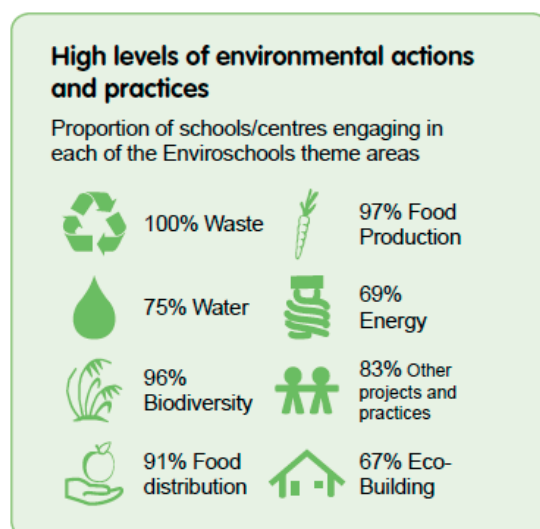
Findings from multi-year evaluation project

A period of stable Central Government funding has enabled Toimata Foundation to undertake some significant research and evaluation over the past 3 years. Toimata has worked with external evaluators Kinnect Group and the key reports produced are:

- *“Enviroschools: Key Findings from the Nationwide Census”*
- *“The Enviroschools Programme Return on Investment Scenario Analysis”*
- *“The Enviroschools Programme: Evaluation report”*

Highlights from the research:

- “Enviroschools is a very high-performing programme and achieves this performance through high levels of systemic support from Toimata Foundation. “ *Kinnect Group*
- The successes of the Enviroschools Programme are realised through a ‘collective impact’ model. i.e. investment is leveraged to create a larger pool of resources and through engaging additional stakeholders the outcomes achieved are enhanced.



- For every \$1 invested by regional partners in Enviroschools, other investors contribute \$2.60 in funding and in-kind support.
- The Enviroschools Census (73% response rate) found participating schools and centres were highly engaged in a range of environmental actions and practices.
- Enviroschools participants report a broad range of outcomes in addition to environmental changes.



- While only a small number of these outcomes can be monetised, the total annual investment in the Enviroschools Programme in 2014 (estimated to be \$10.9M) is projected to realise a return of \$28 million over ten years (at a 5% discount rate). This creates a benefit cost ratio of approximately \$2.50 over ten years for every dollar (or in-kind support) invested in the programme, or a ROI of 11% per annum.
- Depth of practice in Enviroschools increases with time.
- Collaborations with the community are linked deeper levels of practice.
- Enviroschools works for all deciles.

“The Enviroschools Programme is a worthwhile investment, positively impacting students and schools, and providing value at a societal level. The programme is creating an effective intergenerational legacy, empowering young New Zealanders and their communities to create and realise the aspirational vision of a more sustainable world.” *Kinnect Group.*

Conclusion

The Enviroschools Programme is a proven and effective approach for engaging schools and communities in environmental and social action.

With the backbone support of Toimata Foundation, and a network of councils around the country, the programme catalyses learning and action among thousands of young people, their families and communities from early childhood to secondary school. By connecting and coordinating resources and people, openly building and sharing knowledge across communities, widespread action is enabled on a broad scale.

As a funder, the partnership with Enviroschools provides SWDC with multiple points of leverage across the South Wairarapa community, extending the possible impact of its funding beyond what might be expected with a more traditional approach.

Featherston Booktown 2017 – Funding Request Proposal

Planning is now underway for the third annual Booktown festival to be held in Featherston in 2017. With one successful festival weekend under our belts, a second about to launch, and broads aims of promoting literacy through community activity and a celebration of the artefact of the book, Featherston Booktown continues to have significant and positive impact on our community. We would very much like the Council to look at both the social and commercial benefits in considering this application for financial support in the next financial year.

Social Benefits

- An increasingly unified community focused on “doing it for ourselves” rather than relying on others from outside the community to do it for them. The Booktown Arts group is a good example of this, meeting regularly and voluntarily to create displays for local businesses for Booktown weekend.
- An inclusive community which considers all the citizenry and aims to draw those who traditionally are “outsiders” into the group.
- A focus on literacy specifically targeted at the youth of our community.
- Provision of opportunities for the young people of our town to participate in organisation and events, and to take and develop leadership opportunities.

Commercial Benefits

- In our position “first off the hill” Featherston is the gateway to the Wairarapa, offering a unique opportunity to capture the interest and engagement of the thousands of people who pass through.
- Last year’s inaugural Booktown caught the attention of over 2000 visitors, some of whom were “just passing through”, but the majority of whom visited the region specifically to attend this event. This allowed us to showcase the town and its people in many positive ways, proving a boon to the commercial side of the town.
- In 2015 many people visited expecting to stay for an hour and spent the day there. Local business owners reported large boosts in customer numbers and sales – in fact one food supplier ran out of food completely.
- For many visitors, this was their first introduction to a town they had normally just driven through. They were surprised by the variety of businesses in town, and stayed to experience these.
- Post-event survey feedback from those who visited and participated reinforced the impression that this event is a forward-thinking, positive event for the town and the region.
- As a registered charitable trust, Featherston Booktown is not a commercial enterprise but it is clear that positive economic impact is a continuing consequence of our work.

2016 Festival

We expect that we will see once again our town filled with locals and visitors who see much in Featherston to surprise and delight them.

We have created a full and rich programme of events for Booktown 2016 which includes a substantial offering for young people. Many of the workshop presenters and performers have national and international profiles. Renowned children's author Joy Cowley, a Featherston resident, will read her own works to children and will also run a creative writing workshop for adults. The New Zealand String Quartet is offering three performances of "Scary Music", lyrics by Joy Cowley, music by world-renowned composer Gareth Farr.

Other events in our programme (copy attached) encompass a range of presenters from theatrical and literary backgrounds to military and mechanical history.

Underpinning this, the ANZAC Hall will be filled with antiquarian and second-hand booksellers presenting their offerings to book-lovers.

The community supper last year was sold out and is heading this way again in 2016, with Sir Richard Taylor the guest speaker.

Funding

In an ideal world a festival of this calibre would be self-funding, but our wish to keep events accessible to as many as possible in the community means that most are either free or entry by koha.

For this reason, we must rely on the generosity and forethought of individuals and agencies that can assist us to operate and promote our activities.

We hope that the SWDC is able to share the view that Featherston Booktown is a unique opportunity for the town and the wider region to unite in celebration of books and literacy, and to ultimately benefit from the community and commercial development that result.

Featherston Booktown
Operating Budget - Cash Basis

Budget	Actual	Var +/-	Notes/Comment
(noted where different or itemised)			
Income			
Grants, Donations & Gratuities			
Peter & Mary Biggs - initial donation	\$ 3,846.43	\$ 3,846.43	\$ -
Peter & Mary Biggs - programme cost donation	\$ -	\$ 1,000.00	\$ 1,000.00
Creative Communities grant	\$ 3,000.00	\$ 3,000.00	\$ -
Andy Bearpark donation	\$ -	\$ 1,800.00	\$ 1,800.00
Community Board grant	\$ 1,000.00	\$ 1,000.00	\$ -
Trust House grant	\$ 4,000.00	\$ 2,500.00	-\$ 1,500.00
Featherston Arts Trust donation	\$ 305.08	\$ 305.08	\$ -
Lions donation	\$ 700.00	\$ -	-\$ 700.00
Operating Revenue			
Sales of Genealogical Society books	\$ -	\$ 207.00	\$ 207.00
Bookseller stall revenue	\$ 1,200.00	\$ 950.00	\$ -
	John Quilter	\$ 100.00	\$ 100.00
	Ritchie	\$ 50.00	\$ 50.00
	Hedleys	\$ 150.00	\$ 150.00
	Ferret	\$ 100.00	\$ 100.00
	Pegasus	\$ 100.00	\$ 100.00
	Almo's	\$ 150.00	\$ 150.00
	Tinakori Books	\$ 100.00	\$ 100.00
	Jason Books	\$ 150.00	\$ 150.00
	Arty Bee's	\$ -	\$ -
	Unity Books	\$ 50.00	\$ 50.00
	Messines Books	\$ 150.00	\$ 150.00
Sale of tea & cakes	\$ -	\$ 315.90	\$ 315.90
Sale of event tickets (Fish & Chip Supper)	\$ 1,750.00	\$ 2,172.80	\$ 422.80
Merchandise Sales			
Bags	\$ 350.00	\$ 228.00	-\$ 122.00
Aprons	\$ -	\$ -	\$ -
Onsell of EFTPOS Terminal Hire (Arty Bees)	\$ -	\$ 130.52	\$ 130.52
Drinks sales F&C Supper	\$ -	\$ 627.00	\$ 627.00
		\$ -	\$ -
TOTAL INCOME	\$ 16,151.51	\$ 19,182.73	\$ 3,031.22
Expenditure			
Marketing			
Banners	-\$ 1,104.00	Flagz Group Ltd	-\$ 1,190.25
Street Flags	-\$ 1,104.00	Flagz Group Ltd	-\$ 1,104.00
Advertising	-\$ 1,000.00	Fairfax (Wairarapa News)	-\$ 241.50
		Times Age?	\$ -
Signage			
Corflute signs	\$ -	Sign Factory	\$ 621.00
Magnetic signs	-\$ 160.00	Car magnets (Mark's Signs)	-\$ 184.00
Aprons	-\$ 851.00	Graphics on Shirts Ltd	-\$ 851.00
Bags	-\$ 730.00	Scottish Pacific Finance	-\$ 730.25
Window dressing	-\$ 500.00	Kate	-\$ 132.80
Brochures	-\$ 1,068.00	Lamb-Peters	-\$ 1,423.70
Other	\$ -	"Emma Makes" Pencils	-\$ 80.00
Operating Costs			
Megaphones	-\$ 500.00		-\$ 20.00
Toilets	-\$ 650.00		-\$ 661.25
Fish & Chip Supper food supply	-\$ 1,100.00		-\$ 1,550.00
Fish & Chip Supper wine	\$ -	Paulownia Estate	-\$ 717.97
Musicians	-\$ 500.00		-\$ 180.00
Stakes	-\$ 75.00		-\$ 75.00
Shuttles	-\$ 1,000.00		\$ -
Speakers	-\$ 2,600.00		-\$ 3,050.00
Fish & Chip Supper guest speaker	-\$ 800.00	Geoff Robinson	-\$ 800.00
speaker 1	-\$ 150.00	Jane Tollerton	-\$ 300.00
speaker 2	-\$ 150.00	David Dell	-\$ 300.00
speaker 3	-\$ 150.00	Colin Morris	-\$ 150.00
speaker 4	-\$ 150.00	Judy Knighton	-\$ 150.00
speaker 5	-\$ 150.00	Anneliese Hall	-\$ 150.00
speaker 6	-\$ 150.00	Chris Pugsley	-\$ 150.00
speaker 7	-\$ 150.00	Glyn Harper	-\$ 150.00
speaker 8	-\$ 150.00	Owen Marshall	-\$ 150.00
speaker 9	-\$ 150.00	Vivienne Plumb	-\$ 150.00
speaker 10	-\$ 150.00	Kate De Goldi	-\$ 150.00
speaker 11	-\$ 150.00	Tony King	-\$ 150.00
speaker 12	-\$ 150.00	Meg	-\$ 150.00
speaker 13	\$ -	Robyn Ramsden	-\$ 150.00
Venue Hire			
ANZAC Hall	\$ -		\$ -
Senior Citizens' Club	\$ -		\$ -
other	-\$ 200.00		\$ -
other	-\$ 200.00		\$ -
other	-\$ 200.00		\$ -
Speaker food costs	\$ -	Moore Wilsons	-\$ 281.73
EFTPOS terminal hire	\$ -	EFTPOS NZ Ltd	\$ -
Other			
Honorarium, Kate Mead	#####		#####
Bank fees and other Administration	\$ -	Kiwibank fees	-\$ 0.70
TOTAL EXPENSES	-\$ 15,042.00	-\$ 13,071.42	\$ 1,970.58
Surplus/Deficit	\$ 1,109.51	\$ 5,161.31	\$ 4,051.80



To Whom It May Concern

The New Zealand Book Council is delighted to support Featherston Booktown and the efforts of its charitable trust. The inaugural Booktown weekend was well-organised, highly successful and well-attended. By all accounts it was a lively and engaging event and met its goal of celebrating the artefact of the book in a small rural town of historical significance.

Notable was the ability of organisers to unify diverse sectors of the local community in participating in a weekend of activities and events focused on books and literacy.

We look forward to this event continuing and growing in future years and anticipate seeing it go from strength to strength.

Please do not hesitate to come back to me if you have any further queries.

Regards,

A handwritten signature in blue ink, which appears to read 'C. Ferguson'.

Catriona Ferguson

CEO, New Zealand Book Council

Expenses revised			
marketing	street flags		\$ 550.00
marketing	Large billboard materials		\$ 150.00
marketing	newspaper/radio advertising		\$ 5,000.00
marketing	bumper stickers/bookmarks		\$ 250.00
marketing	corflute billboard signs		\$ 1,000.00
marketing	5000 A5 booklets		\$ 1,942.35
marketing	150 A3 Colour posters		\$ 200.00
marketing	5,000 colour DL Flyers		\$ 770.50
Operations cost	Musicians (Friday night)		\$ 500.00
Operations cost	Food & wine for Friday dinner		\$ 3,000.00
Operations Cost	Volunteer uniforms		\$ 1,700.00
Operations Cost	Window dressing for local businesses		\$ 150.00
Operations cost	Rimutaka Shuttles (transfers)		\$ 750.00
Operations Cost	Workshop facilitators		\$ 1,200.00
Operations cost	Writer presenters		\$ 1,650.00
Operations cost	After dinner speaker		\$ 800.00
Operations cost	Liquor licence		\$ 207.00
Operations cost	Director honorarium		\$ 6,000.00
Operations cost	International Organisation of Booktowns membership		\$ 150.00
Operations Cost	Sundries (cleaning products, decorations etc)		\$ 450.00
Operations cost	Megaphones/EFTPOS hire		\$ 155.00
Operations cost	banners		\$ 300.00
Operations cost	Playshop Live - Performers		\$ 600.00
Operations cost	NZ String Quartet	Per diem cost	\$ 1,000.00
Operations cost	St Teresa's school	Contribution to heating costs	\$ 50.00
Operations cost	Ambulance and staffing		\$ 493.00
Operations cost	First Aid kits		
Operations cost	Bookseller accommodation		\$ 900.00
		Total Projected Expenditure	\$ 29,917.85
Income			
Stall Revenue	Rental of bookstalls by booksellers		\$ 1,000.00
Ticket Sales	Friday night Dinner		\$ 3,600.00
Sales	Wine sales from Friday night dinner		\$ 2,000.00
Sales	Tea & Cakes café income		\$ 500.00
Merchandise	Bookbag sales		\$ 450.00
Ticket sales	Entry to events (@\$5 per person)		\$ 2,000.00
	NZSQ		\$ 2,000.00
	Joy Cowley 3-hour workshop		\$ 2,000.00
		Total Projected Income	\$ 13,550.00
		Opening balance	\$ 1,100.00
		Total available funds	\$ 14,650.00
		Surplus/Shortfall	\$ 15,267.85



Charity Summary

Registration Number:	CC52369
Registration Date:	26/06/2015
Charity Name:	Featherston Booktown Trust

Charity Details

Trading Name

Registration Details

Registration Status:	Registered
Balance Date:	March 31
IRD Number:	Restricted

Address for Service:

Charity's Postal Address: 294 Underhill Road
RD 3
Featherston 5773

Charity's Street Address: 294 Underhill Road
RD 3
Featherston 5773

Charity's other details

Phone:	04 8906017
Fax:	
Email:	lincoln@booktown.org.nz
Website:	http://www.booktown.org.nz/
Social Network Name:	
Areas of Operation:	Wellington - Wairarapa

Purpose & Structure

Activities

Main Activity:	Provides services (e.g. care / counselling)
Activities:	Provides services, Provides advice / information / advocacy, Provides human resources

Sectors

Main Sector: Arts / culture / heritage
 Sectors: Arts / culture / heritage

Beneficiaries

Main Beneficiary: General public
 Beneficiaries: Children / young people, Older people, General public

Annual Returns

Date Submitted	For Year Ended	Total Income	Total Expenditure	Reference
----------------	----------------	--------------	-------------------	-----------

Officer Details**Current Officers**

Name	Officer Type	Position
Lincoln Gould	Individual	Trustee/Chair
Mary-Elizabeth Biggs	Individual	Trustee
Peter Biggs	Individual	Trustee
Peter Monk	Individual	Trustee
Ross Vickery	Individual	Trustee



Programme of Events - 20 - 22 May, 2016

*Denotes event especially suitable for youth

Date	Event	Venue
Friday 20 May		
6.30pm	Fish & Chips Supper , with guest speaker. Music by The Bush Rangers.	Kiwi Hall, ANZAC Hall
Saturday 21 May		
9.30 am	Anneleise Hall - The Secret Lives of Sheepdogs*	Royal Hotel
10.15 am	Michelle O'Connell - The Crossing	Royal Hotel
10.30 am	Jared Gulian - Blogging as Literary Art Form	Royal Hotel
11.00 am	NZ String Quartet - Scary Music (1 of 3). Lyrics by Joy Cowley, music by Gareth Farr* Ages 6-14	Senior Citizens' Hall
11.00 am	Playshop Live - 1 hour improvised theatre workshop for children. Child directed based on favourite literature.* (1 of 3)	Supper Room, ANZAC Hall
11.30 am	Mr Sainsbury's Vintage Book Consultation	Kiwi Hall
12.00 pm	Joy Cowley reads aloud (1 of 2)*	Royal Hotel
1.00 pm	NZ String Quartet - Scary Music (2 of 3). Lyrics by Joy Cowley, music by Gareth Farr* Ages 6-14	Senior Citizens' Hall
2.00 pm	Joy Cowley reads aloud (2 of 3)*	Royal Hotel
3.00 pm	NZ String Quartet - Scary Music (3 of 3). Lyrics by Joy Cowley, music by Gareth Farr* Ages 6-14	Senior Citizens' Hall
3.00 pm	Author Interview with Peter Biggs	Kiwi Hall
Sunday 22 May		
9.30 am	Mary-Anne Scott & Joy Scott - Grandpa's Series of books and Snakes & Ladders*	Royal Hotel
10.30 am	Mr Sainsbury's Vintage Book Consultation	Kiwi Hall
10.30 am	Playshop Live (2 of 3) - 1 hour improvised theatre workshop for children. Child directed based on favourite literature.*	Supper Room, ANZAC Hall
11.00 am	Erin Kavanagh-Hall reads her poetry	Retro Back Room, Senior Citizens' Hall
11.30 am	Literary Fancy Dress Parade*	
11.30 am	Bob Francis: A Story of My Town	Royal Hotel
1.00 pm	Philip Percy	Kiwi Hall
1.00-4.00 pm	Joy Cowley Creative Writing Workshop for Adults (6 senior secondary student scholarships offered)	Senior Citizens' Hall

2.00 pm	Kate de Goldi	Kiwi Hall
2.00 pm	Graeme Jupp - The Rimutaka Incline	Royal Hotel
2.30 pm	Playshop Live (3 of 3) - 1 hour improvised theatre workshop for children. Child directed based on favourite literature.*	Supper Room, ANZAC Hall
3.00 pm	Graeme Carter - the Rimutaka Tunnel	Royal Hotel
3.00 om	Author Interview with Lincoln Gould	Kiwi Hall

Ongoing events & workshops throughout the weekend.

Bookbinding (Robyn Ramsden, Jill Rose)*	St Teresa's School
Printing (Tony King)*	St Teresa's School
Paper-craft (Meg Prebble & Caron Dallas)*	St Teresa's School
Zine workshops (Myrtle Chickpea - Sam Dew)*	Featherston School
Forgotten - Kiwi Songs of WW1 in the ANZAC Hall or RSA (David Dell - pop-up)	
Songbirds popup choir	Around town
Three Mile Brass	Around town
Walking tours of Historic Featherston (Porky Sexton)	
Literary Treasure Trails* Two age groups for children; adult section as well	Around town
Cross Creek Railway Society (Mini-Fell Engine) Booktown Headquarters	Village Green Library

SHARE YOUR VIEW ON THE FUTURE



63



Feedback must be received by 4pm Monday 9 May 2016.

Please read the consultation document before providing your feedback.

EMAIL: ap@swdc.govt.nz
IN PERSON: Drop form to your local library or the Council Office in Martinborough
BY POST: Fold and affix a stamp Council Office Martinborough
FAX: (06) 306 9373
ON LINE: www.swdc.govt.nz
Your name and feedback will be public documents.
All other personal details will remain private.

FIRST NAME: ROBERT
LAST NAME: PETELIN
ORGANISATION:
Only if authorised to submit on behalf of organisation, one per organisation)
EMAIL ADDRESS:

Sewerage

- How would you like to see the sewerage upgrade funded?
- Loan funded in line with the 2015/25 Long Term Plan
 - Defer cyclical maintenance to accelerate stage one of irrigation to land for Martinborough and Greytown by June 2017.

Roading

Are there any streets or roads in the district you think the speed limit should be reviewed that are not outlined in this document?

Water Supply

- If water supply revenue is in excess should we
- Reduce the rates requirement while maintaining current service levels
 - Maintain the current rates revenue diverting it where necessary or able to other water supply initiatives.

Cycle Strategy

- Do you support the draft cycle strategy?
 Yes No
- If not what changes would you like to see?
RESTRICT TO ONE LINE
TRAFFIC (ENFORCE)

Which aspects of the cycle strategy are most important to you?

- (Please rank from 1-5 with 1 being the most important):
- Urban cycling (safety and marking routes)
 - Urban amenity (cycling parks, racks and support)
 - Development of linkages (routes between destinations e.g. Featherston to Martinborough/ Greytown)
 - Traffic safety (as most cycling is on road a concentration of safer roads for cycling)
 - Tourism and development (cycle races and events and tourism trails e.g. vineyards)
- Are there any other cycle ways or physical works you would like to see considered in the cycle strategy future works plan?
ALL THE COST SHOULD COME
FUNDING OF CYCLE REGISTRATION

Pensioner (Community) Housing

- How would you like to see South Wairarapa District Council pensioner housing managed in the future?
- Status quo
 - Transfer management of pensioner housing units to a Community Housing Provider management company (if available)
 - Gift ownership to Community Housing Provider
 - Sell those units (where able) to Community Housing Provider

Fees and Charges

- Do you support the draft fees and charges
 Yes No
- If not, why?
IN THE PAST AND NOW IT CAME
FROM RATES YOU WANT INCREASE
RATES PLUS INTRODUCE NEW CHARGES
- If you would like to comment or propose something different now is your chance. (Continue over page if required)

Affix
stamp
here

South Wairarapa District Council
PO Box 6
Martinborough
5741

R. PETEL IN
7 VENICE ST.
MARTINBOROUGH

- MY MAIN CONCERN IS THE TREATMENT OF SENIOR CITIZENS BY YOUR COUNCIL, FOR INSTANCE
- 1) THE TIMING OF RUBBISH COLLECTION BE REVIEWED AS 7.30AM IS FAR TOO EARLY FOR THE SENIOR MEMBERS OF THE COMMUNITY, ESPECIALLY IN WINTER TIME WHEN THE SENIORS LIKE TO SLEEP IN. WHEN YOU INTRODUCED SUCH EARLY COLLECTION CALL WITHOUT ANY WARNING OR CONSULTATION WHATSOEVER IN SOME CASES PEOPLE PUT THEM OUT NIGHT BEFORE, WHEN THERE IS ANY FOOD IN THE BAG THE STRAY DOGS MAKE THEM MASS OUT OF IT AND IN MOST CASES THE WASTE COLLECTOR DOES NOT TIDY UP THE MASS.

- THE COST OF PLASTIC TO THE PUBLIC \$0.80^d COST TO THE COUNCIL IS \$0.25^d
THE COUNCIL'S JOB IS TO LOOK AFTER ITS RATEPAYERS NOT PROFIT FROM THEM. EQUALLY
PLASTIC BAGS ON A WINDY DAY THEY ARE BLOWN AWAY AND GETS LOST IN BIG WAY
AGAIN COST OF A BIN TO COUNCIL \$4 COST FROM COUNCIL TO RATE PAYER \$17.00 AGAIN
- 2) YOU ARE PROFETERING! REPLACING DOG TAG LAST TIME I NEEDED ONE IT COST NOTHING NOW. YOU ARE TO CHARGE \$7.50

Please complete the feedback form on the previous page, cut out and fold this page then post

- 3.) PENSIONER HOUSING IF THEY ARE NO BETTER OFF WHY CHANGE OPTION 1 STATUS QUO
- 4.) RATES SHOULD NOT EXCEED INFLATION SINCE YOU PROVIDE EXTRA SERVICES
- 5.) FOOT PATH IN VENICE ST. YOU HAVE DONE ONE HALF ^(100M) IN 2015 AND WE WERE TOLD
THE ~~OTHER~~ OTHER HALF (100M) WILL BE DONE IN 2016 NOW I'M TOLD THAT IT'S NOT SO,
WOULD NOT BE PRACTICAL TO FINISHED OFF AT THE SAME TIME AS IT IS IN NAPLES ST.
AND HOW COME YOU HAVE DONE FULL LENGTH IN NAPLES ST. FROM PRINCES ST. TO
BROADWAY 200M AND FULL LENGTH DANIEL ST 500M FROM JELLEDGE ST. TO REGENT ST
AND YOU COULD NOT HAVE DONE 100M IN VENICE ST.

I'M AMASAD YOU CALL YOURSELF SKILED MANAGERS AND LONG SERVING
COUNCIL ADMINISTRATORS AT LEAST SOME ^{OF YOU} WALK AWAY FROM IT

Submitted on Monday, 9 May 2016 - 11:23am Submitted by anonymous user: [202.49.136.162]

Submitted values are:

--Submitter Details--

Name: J Reed

--Submission Hearings--

Do you want to speak to your submission? No

Speaking preference:

--Sewerage--

How would you like to see the sewerage upgrade funded: Loan funded in line with the 2015/25 Long Term Plan

--Roading--

Are there any streets or roads in the district you think the speed limit should be reviewed?

Donald Street to 50 kms - this is a recreational road with a lot more houses on it.

Roundabout at the beginning of Featherston

State highway 53 between Featherston and Martinborough starting further back around Boundary road with 70 before the 50 by Donald Street. Cars take until the school to slow down to 50.

--Water Supply--

If water supply revenue is in excess should we: Reduce the rates requirement while maintaining current service levels

--Cycle Strategy--

Do you support the draft Cycle Strategy? Yes

If not what changes would you like to see?

--Which aspects of the Cycle Strategy are most important to you?--

Please rank from 1-5 with 1 being the most important:

- Urban cycling (safety and marking routes): 1
- Urban amenity (cycling parks, racks and support): 1
- Development of linkages (routes between destinations e.g. Featherston to Martinborough/Greytown): 1
- Traffic safety (as most cycling is on road a concentration of safer roads for cycling): 1
- Tourism and development (cycle races and events and tourism trails e.g. vineyards): 2

Are there any other cycle ways or physical works you would like to see considered in the cycle strategy future works plan?

--Pensioner (Community) Housing--

How would you like to see SWDC pensioner housing managed in the future? Status quo

--Fees and Charges--

Do you support the draft fees and charges?
If not, why?

--Additional Comment--

If you would like to comment or propose something different now is your chance:

Upload submission:

Upload additional information:

The results of this submission may be viewed at:

<http://www.swdc.govt.nz/node/736/submission/589>

Submitted on Monday, 9 May 2016 - 11:46am Submitted by anonymous user: [58.84.227.249]
Submitted values are:

--Submitter Details--

Name: Martin Freeth

--Submission Hearings--

Do you want to speak to your submission? Yes

Speaking preference: May 25th pm

--Sewerage--

How would you like to see the sewerage upgrade funded: Defer cyclical maintenance to accelerate stage one of irrigation to land for Martinborough and Greytown by June 2017

--Roading--

Are there any streets or roads in the district you think the speed limit should be reviewed?

--Water Supply--

If water supply revenue is in excess should we: Maintain the current rates revenue diverting it where necessary or able to other water supply initiatives

--Cycle Strategy--

Do you support the draft Cycle Strategy? Yes

If not what changes would you like to see?

--Which aspects of the Cycle Strategy are most important to you?--

Please rank from 1-5 with 1 being the most important:

- Urban cycling (safety and marking routes): 3

- Urban amenity (cycling parks, racks and support): 4

- Development of linkages (routes between destinations e.g. Featherston to Martinborough/Greytown): 2

- Traffic safety (as most cycling is on road a concentration of safer roads for cycling): 1

- Tourism and development (cycle races and events and tourism trails e.g. vineyards): 5

Are there any other cycle ways or physical works you would like to see considered in the cycle strategy future works plan?

I would like to see a higher priority given to construction and maintenance of a proper cycle path on the Featherston side of the Rimutuka Incline. The Upper Hutt side of this rail trail is developed for cycling by a wide range of recreational cyclists: The Featherston side is not. The trail is potentially an

excellent asset for more hikers and cyclists but the surface and width is very poor in parts of the Featherston side. A cycle strategy for the district should include upgrading and marketing the whole rail trail as a cycling route of national importance, especially its access is connected to the passenger train service from Featherston to Maymorn. Why would we develop a route from Featherston to Cross Creek -- a nice idea -- without addressing the quality of the Incline as a cycling route?

--Pensioner (Community) Housing--

How would you like to see SWDC pensioner housing managed in the future? Status quo

--Fees and Charges--

Do you support the draft fees and charges? Yes

If not, why?

--Additional Comment--

If you would like to comment or propose something different now is your chance:

The consultation document reports on the Waihinga Centre project and on the SWDC's commitment to proceeding with this project in 2016/17. I ask that the plan be amended to defer that commitment until after the forthcoming 2016 Local Body Elections.

Decisions made on this project since November 2015 have been made without sufficient mandate from the electors of South Wairarapa District. This is clearly evident from:

- * the petition of Patricia Higginson and 743 others (dated 22 February 2016) requesting that Council make no further decisions on the Waihinga Centre project until alternatives to the current design were considered and until Council engaged in proper consultation with the community;
- * the submission to Council of a professionally-designed alternative concept for a Martinborough Town Hall and Community Centre in December and January of 2015/16 as demonstration of the potential for community aspirations to be met by designs other than that currently favoured by Council;
- * submissions to Council (24 February) that the current design is not in accord with visual character requirements of the Wairarapa District Plan and that furthermore, to proceed with this design would be inconsistent with Council's own determination in November 2015 not to proceed with the Waihinga Centre plan "in its current form" (ie the form in February 2016 was essentially the same as in September 2015 when it was submitted for community consultation on Council's proposal for a targeted rate);

- * the strong rejection by ratepayers (October 2015) of that targeted rate proposal in a Council-organised poll on that question and the Council's inconsistency in interpreting the poll result as community support for some form of Waihinga Centre plan; and
- * Council's inability to demonstrate community support for the plan between 2013 and 2015 other than by a) reference to the volume of Council-sponsored publicity inserts in local newspapers and rates newsletters, and b) reference to approx 200 community members who pledged private funding for some form of community centre and town hall development (which may or may not have accorded with the Waihinga Centre plan as adopted by Council on 24 February 2016).

The 2016 elections will be held in the immediate future, 8 October. Given this and the contentious nature of the Waihinga Centre project, the annual plan needs to include a deferment of any further decisions.

Sincerely
Martin Freeth

Upload submission:
Upload additional information:

The results of this submission may be viewed at:
<http://www.swdc.govt.nz/node/736/submission/590>

Submitted on Monday, 9 May 2016 - 12:33pm Submitted by anonymous user: [129.223.99.190]

Submitted values are:

--Submitter Details--

Name: Pete Roberts

--Submission Hearings--

Do you want to speak to your submission? No

Speaking preference:

--Sewerage--

How would you like to see the sewerage upgrade funded:

--Roading--

Are there any streets or roads in the district you think the speed limit should be reviewed?

--Water Supply--

If water supply revenue is in excess should we:

--Cycle Strategy--

Do you support the draft Cycle Strategy?

If not what changes would you like to see?

--Which aspects of the Cycle Strategy are most important to you?--

Please rank from 1-5 with 1 being the most important:

- Urban cycling (safety and marking routes):
- Urban amenity (cycling parks, racks and support):
- Development of linkages (routes between destinations e.g. Featherston to Martinborough/Greytown):
- Traffic safety (as most cycling is on road a concentration of safer roads for cycling):
- Tourism and development (cycle races and events and tourism trails e.g. vineyards):

Are there any other cycle ways or physical works you would like to see considered in the cycle strategy future works plan?

--Pensioner (Community) Housing--

How would you like to see SWDC pensioner housing managed in the future?

--Fees and Charges--

Do you support the draft fees and charges?

If not, why?

--Additional Comment--

If you would like to comment or propose something different now is your chance: I have posted a submission but it may not reach you in time , also I have amended it slightly so would you please use the attached submission instead.

Upload submission:

http://www.swdc.govt.nz/sites/default/files/webform/SWDC_2016_Annual_Plan_submission_Pete-Roberts.docx

Upload additional information:

The results of this submission may be viewed at:

<http://www.swdc.govt.nz/node/736/submission/591>

Submission on SWDC Annual Plan 2016

Pete Roberts,
82 Brandon Street,
Featherston,
5710

I do not want to appear to present my submission.

Dated: 9 May 2016

Waste Water - defer cyclical maintenance; flooding problems in the streets (of Featherston) are caused by narrow pipes with insufficient capacity so would require a major replacement program to fix.

Pensioner Housing - I support keeping it as it is but look to increase the stock to service the waiting list; that means Council needs to obtain quotes for new housing units.

Martinborough Town Hall - the majority of respondents to the targeted rate consultation voted against and Council has ignored the many requests to provide an alternative within available funds so put it on hold till alternative funding is attained (most of those who presented submissions said this – it is in the documents on the website).

Featherston Town Centre - the further consultation, as promised by Council, has never happened and Council has now committed to the altered plan now under way, including using about half the area earmarked on the original plan for shops.

Cycle Strategy - the Featherston to Cross Creek cycle track (except it is multi-use and all criteria contradict the NZTA design & build document on cycle ways. How does Council expect to get funding from NZTA in these circumstances? The spending was committed to and WORK started before Council's draft consultation document was issued. The implication of building a cycle track (in the vein of the Greytown to Woodside one) was of a track that did not follow the road, so we were misled as to what we were getting.

-----+++++++-----

General Comments

One thread that goes through all the different items is the question about what is and what is not a core service. The Long Term Plan does not define them. You recognise water supply and waste water as core services.

I submit that pensioner housing should also be a core service as should be rubbish collection, maintaining roads (including footpaths, berms, verges and street lighting), libraries, swimming pools, reserves and providing the environment to encourage businesses.

On the subject of pensioner housing, at the annual plan presentation Council's CEO said that even though you have a waiting list it would be too costly to provide more housing. When I asked what the quotes were for this he replied that there were no quotes, I would suggest that the fit-out costs (next paragraph) for the Waihinga centre would pay for 4 new units – someone like Versatile (garages, sheds & houses) could easily give an indication of costs for their simple houses (having lived in one I would recommend them). I acknowledge that Central Government recommends it is not a core service but as SWDC has been successfully providing this service within budget, I suggest Council retain and expand this service as this is likely to be a better outcome for the pensioners.

The creation of the Featherston Town square is not a core service, neither is the new building known as the Waihinga Centre – the preservation and modification of the existing Martinborough Town Hall is valid but not the extra non-funded work that you have voted to do (I have read the extra information that was, eventually, put on the website notes for the February council meeting and it still does not address the fit-out costs that councillors Robertson & Olds have informed us – at the meeting with Featherston Ratepayers & Residents Association representatives - are \$600,000). The promised further consultation before committing to work on Featherston Town Square has not happened, we still don't know what the whole picture will look like and the area is, I understand, still zoned commercial. The only plan which submissions were made on has lost half the shop area to the enlarged town square, this was not the result of consultation.

The cycle strategy is another non-core service and are we going to be consulted on stage 2 of the Featherston to Cross Creek **multi-use track** ; note: Council is still calling it a cycle track which is misleading. Councillor Olds has informed me that you are waiting for the outcome of the funding application to NZTA, the last workshop for that was at least a month ago.

Featherston Tennis Club
Featherston Netball Club
Underhill Road
Featherston 5170

9th May 2016

South Wairarapa District Council
PO Box 6
Martinborough

Dear Sir/Madam

This submission to the 2016/2017 Long Term Plan for the SWDC relates to both the Featherston Tennis and Featherston Netball Clubs.

⑩ Our clubs support the Council's consideration to turn the space between Underhill Road and the stadium into additional car parking. This would provide much needed parking for users and visitors to the stadium. At times it is very congested in that area and could be dangerous for children. We also support Angie Smith's concern for the rough surface of the carpark between the stadium and the artificial turf needing to be repaired.

⑩ We would also support and appreciate access to the toilets in the stadium directly from the exterior of the building. With the high usage of the artificial turf, it is embarrassing and inconvenient that we are unable to have toilet facilities available. Being able to obtain a key in advance for access to the stadium is not always possible. We would also like to see the showers being made usable again.

⑩ We also support the concept of a sports hub for Featherston based on the Greytown model.

Yours faithfully

Laraine Kerr
Secretary/Treasurer

Featherston United Football
Underhill Road
Featherston 5170

9th May 2016

South Wairarapa District Council
PO Box 6
Martinborough

Dear Sir/Madam

Re: Submission to the SWDC 2016/2017 Long Term Plan

⑩ We would like the trees trimmed along Underhill Road by the football fields and more parking available. A very large number of children participate in this sport and on a Saturday morning it can be very crowded with vehicles parked both sides of the road. Provision of car parking (as in the paragraph below) would help this situation and be a much safer option for the children especially.

⑩ Our club support the Council's consideration to turn the space between Underhill Road and the stadium into additional car parking. This would provide much needed parking for users and visitors to the stadium and the artificial turf. At times it is very congested in that area and could be dangerous for children. We also support Angie Smith's concern for the rough surface of the carpark between the stadium and the artificial turf needing to be repaired. The turf is also used by the football players every Wednesday evening and has a large number of players with vehicles.

⑩ We would also support and appreciate access to the toilets in the stadium directly from the exterior of the building. It would be very convenient to have the toilet facilities available for our players. Being able to obtain a key in advance for access to the stadium is not always possible. We would also like to see the showers being made usable again.

⑩ We also support the concept of a sports hub for Featherston based on the Greytown model.

Yours faithfully

Laraine Kerr
Secretary/Treasurer

Submitted on Monday, 9 May 2016 - 1:16pm Submitted by anonymous user: [122.56.234.67]

Submitted values are:

--Submitter Details--

Name: C Webley

--Submission Hearings--

Do you want to speak to your submission? Yes

Speaking preference: May 25th am

--Sewerage--

How would you like to see the sewerage upgrade funded: Defer cyclical maintenance to accelerate stage one of irrigation to land for Martinborough and Greytown by June 2017

--Roading--

Are there any streets or roads in the district you think the speed limit should be reviewed?

--Water Supply--

If water supply revenue is in excess should we: Reduce the rates requirement while maintaining current service levels

--Cycle Strategy--

Do you support the draft Cycle Strategy?

If not what changes would you like to see?

--Which aspects of the Cycle Strategy are most important to you?--

Please rank from 1-5 with 1 being the most important:

- Urban cycling (safety and marking routes):
- Urban amenity (cycling parks, racks and support):
- Development of linkages (routes between destinations e.g. Featherston to Martinborough/Greytown):

- Traffic safety (as most cycling is on road a concentration of safer roads for cycling):

- Tourism and development (cycle races and events and tourism trails e.g. vineyards):

Are there any other cycle ways or physical works you would like to see considered in the cycle strategy future works plan?

--Pensioner (Community) Housing--

How would you like to see SWDC pensioner housing managed in the future? Status quo

--Fees and Charges--

Do you support the draft fees and charges? No
If not, why? Insufficient evidence to justify % increase.

--Additional Comment--

If you would like to comment or propose something different now is your chance:

Better communication and more transparent decision making.

Waihinga centre funding shortfall should not be funded from district reserve funds. These should be for core amenities eg roading and new footpaths.

Improve service and professionalism. Eg when council have finished public excluded meeting how are public notified??

In light of Carterton centre paper re costs, review WC feasibility studio for proj costs and income. Eg Madcaps not annual.

Publish guidelines for OIA submission and establish formal process for logging. Eg. Acknowledgement of receipt. Do not leave until final day to decline.

Upload submission:

Upload additional information:

The results of this submission may be viewed at:

<http://www.swdc.govt.nz/node/736/submission/592>

Submitted on Monday, 9 May 2016 - 1:35pm Submitted by anonymous user: [121.75.245.111]

Submitted values are:

--Submitter Details--

Name: Robyn Ramsden

--Submission Hearings--

Do you want to speak to your submission? No

Speaking preference:

--Sewerage--

How would you like to see the sewerage upgrade funded: Loan funded in line with the 2015/25 Long Term Plan

--Roading--

Are there any streets or roads in the district you think the speed limit should be reviewed?

Speeds outside all the schools need to be reviewed. Where possible the speed should be reduced around school drop off and pick up times. Improved signage to indicate that there is a school.

All entrances to Featherston need to be updated, particularly the North entrance to the town. The 70 km zone needs to be extended out past Boundary Road. The 50 km zone needs to be moved up further towards Boundary Road as I've observed that having the change at the bridge is too late with the houses and other public buildings now on the stretch of road. On Revans Street cars seem to be travelling faster than the posted 50 km when they reach Featherston School. The 50 km zone should be extended at least 1 km further down Western Lake road. There are more houses out there now with young children who have to be driven to school, when they could be cycling, but are not due to the traffic speed.

--Water Supply--

If water supply revenue is in excess should we: Reduce the rates requirement while maintaining current service levels

--Cycle Strategy--

Do you support the draft Cycle Strategy?

If not what changes would you like to see?

--Which aspects of the Cycle Strategy are most important to you?--

Please rank from 1-5 with 1 being the most important:

- Urban cycling (safety and marking routes): 5
- Urban amenity (cycling parks, racks and support): 1
- Development of linkages (routes between destinations e.g. Featherston to Martinborough/Greytown): 4
- Traffic safety (as most cycling is on road a concentration of safer roads for cycling): 2
- Tourism and development (cycle races and events and tourism trails e.g. vineyards): 3

Are there any other cycle ways or physical works you would like to see considered in the cycle strategy future works plan? If the walk way next to the train tracks between Fox and Bell streets is to be added to the cycle list, then it needs to be an actual path and wide enough for both cycles and people walking to and from the train station.

--Pensioner (Community) Housing--

How would you like to see SWDC pensioner housing managed in the future? Status quo

--Fees and Charges--

Do you support the draft fees and charges? Yes
If not, why?

--Additional Comment--

If you would like to comment or propose something different now is your chance:

Water Supply: We should only be taking the water we need from the river and aquifer. Over taking water will result in the river flowing at lower levels and damage to the aquifers. The water needs to be tested more rigorously than it currently is. We have been advised by health professionals to boil our drinking water, and have done so for over a year now, our rates of gastro intestinal illness have almost completely disappeared. Why would this be necessary if the water was of a suitable standard? We should also be fluoridating our water. See appendix A for the arguments on this topic.

Pensioner Housing: We need to maintain our pensioner housing. We even need to find a way to add to our pensioner housing to accommodate the "baby boomers" as they retire. I note that the CEO is very keen to get rid of pensioner housing. However I think passing this on to a group would see residents worse off than they are now.

The Featherston Library is still not wheelchair accessible. It has a good ramp up to the door but there is still a step at the door which most people in a wheelchair are not able to get over. The access at the back of the library is around the back and

I've been told that one can knock for sometime before you are heard, if you are heard at all. The library is a hub for the Community and for the Council. This access needs to be fixed over upgrading Greytown's issues as at least wheelchair users can get into the library.

There is no footpath on either side of William Benton Street. This is a dangerous issue for parents with young children. As I walk my own children up Lyon Street, I see many families walking with their children or children on their own walking down the middle of the street. They avoid the grassy areas as walking on the middle of the road is preferable to having wet feet all day, as the weather worsens the verge will be less capable of being walked on or have a buggy or wheelchair on. This is a health and safety matter. It must be addressed before the end of the 2015/16 financial year.

Other than speed the Council needs to address the number of deep kerbs in Featherston. Especially around the skate park. It also needs to address the continuous flooding that occurs on along Lyon Street whenever it rains. The flooding forces parents and young children to walk on the road, at times down the middle of the road to avoid the water.

Upload submission:

Upload additional information:

<http://www.swdc.govt.nz/sites/default/files/webform/Appendix%20A%20-%20Fluoridation%20article%20by%20Ken%20Perrott.pdf>

The results of this submission may be viewed at:

<http://www.swdc.govt.nz/node/736/submission/594>

The science behind community water fluoridation

Dr Ken Perrott, Science Advisor, Making Sense of Fluoride.

Fluoride occurs naturally. It is present in trace amounts in our food and beverages, and is a normal and natural component of our bones and teeth. When present at optimum levels it strengthens and hardens our bones and teeth, and there is plenty of research, both in New Zealand and internationally, showing its beneficial effects in reducing tooth decay.

Not too little, not too much

However, like all beneficial trace elements, fluoride can be harmful when dietary intake is excessive. Skeletal fluorosis, a disease causing pain and damage to bones and joints, is common in parts of China, India, the Middle East and other areas because of naturally high levels of fluoride in drinking water and food, and because of pollution from household use of coal. This is not a problem in New Zealand, the USA, Ireland or other countries where community water fluoridation is used, because the natural levels of fluoride are deficient.

The World Health Organisation recognises both the benefits of supplementation, when natural fluoride levels are low, and the need for removal of fluoride when they are high. You can find their Water Sanitation and Health statement at

http://www.who.int/water_sanitation_health/oralhealth/en/ which says in part:

- “Fluoridation of water supplies significantly improves dental health in regions with low natural fluoride in the water
- Naturally high levels of fluoride may cause fluorosis and in some regions defluoridation programmes or alternative water supplies are required”

What about the fluoridating chemicals used?

Some people object to these chemicals because they are manufactured, rather than natural. However, this makes no difference to the fluoride in your drinking water. Whether the source is natural or manufactured, the fluoride in water is present as the hydrated fluoride anion. The source makes absolutely no difference.

The most commonly used fluoridating chemical, fluorosilicic acid, is a by-product of the phosphate industry – in New Zealand it is a by-product of the manufacture of superphosphate fertiliser. When the concentrated material is added during water treatment, it decomposes to form silica and the hydrated fluoride anion – exactly the same as the naturally occurring materials.

The fluoridating chemicals are not “industrial waste.”

In fact, there are strict regulatory controls on the levels of contamination allowed for water treatment chemicals. While critics may stress the difference between “natural” forms of fluoride – like calcium fluoride minerals – and manufactured chemicals, the “natural” forms

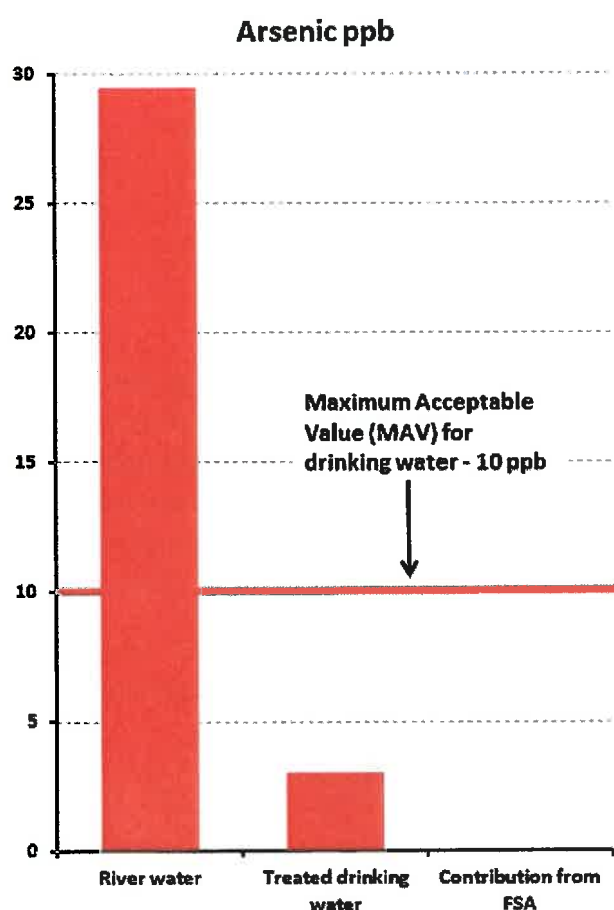


Figure 1: Natural sources of contamination are usually much greater than from water treatment chemicals. (FSA = fluorosilicic acid; ppb = parts per billion)

would not be suitable for water treatment because they contain contaminants. Purification would require manufacturing processes.

In practice, the regulatory control of water treatment chemicals usually means the levels of contamination originating from water treatment may be lower than that already present in the source water. Recent Canadian research showed this to be the case for contamination of arsenic. The Hamilton water supply is a local example. Arsenic levels in the Waikato River (which is the source of Hamilton's drinking water) is about three times the maximum acceptable level for drinking water (see Figure 1). These levels are reduced during treatment to less than the maximum acceptable level. But the "natural" arsenic concentration is still hundreds of times higher than what is introduced by fluoridation.

But is fluoridation safe?

Research shows that it is. This was confirmed in a recent review carried out

by the Office of the Prime Minister's Chief Scientific Advisor, along with the Royal Society of New Zealand. The review, "*Health effects of water fluoridation: A review of the scientific evidence*," was commissioned, and paid for, by local bodies and is available at:

<http://www.royalsociety.org.nz/expert-advice/papers/yr2014/health-effects-of-water-fluoridation/>

Research in areas of endemic fluorosis overseas, where dietary fluoride intake is much higher, does show negative health effects when fluoride intake is excessive. That sometimes, but rarely, occurs in countries such as New Zealand if children habitually eat excessive amounts of fluoridated toothpaste, or are exposed to industrial pollution. However, it is wrong to use this research to criticise community water fluoridation, where the levels of fluoride are much lower.

Fears of overdosing on fluoridated water are not justified. Like all beneficial microelements, there is a range of optimum intakes – not a strict dose. Think about iodine in salt or selenium in breads and cereals as similar cases.

Recommendations for the optimum concentration of fluoride in drinking water are based on a balance between the benefits of reducing tooth decay, and the very slight risk of an increase in prevalence of mild forms of dental fluorosis. These mild forms are not considered aesthetically unattractive, and are usually only detectable by a dentist. Severe forms of dental fluorosis are not caused by water fluoridation.

Is fluoridation a medicine?

Opponents claim it is, but legal rulings do not support them. In 2014 A NZ High Court decision from Justice Collins specifically excluded fluoridation from the Medicines Act. It said, in part:

“ the concentration threshold for fluoride in Schedule 1 of the Regulations is so vastly higher than the maximum allowable concentration of fluoride in domestic water supplies that, when fluoride is added to domestic water at the authorised levels, it falls outside of the definition of “medicine” in the Act.”

Think about it. If fluoride were designated a medicine because of its beneficial role in oral health, then the law would also be required to designate iodine in salt, selenium in bread, iron in meat and calcium in milk as medicines. That would be plain silly. We have quite a number of beneficial elements in our diet, and we don't call them medicines.

What about the Bill of Rights?

In 2013/2014, fluoridation opponents took a High Court case arguing that community water fluoridation violated our Bill of Rights Act. They lost.

Freedom of choice, or personal responsibility vs. social action, is a common argument raised against water fluoridation. Justice Hansen's High Court Judgement makes this comment on those arguments:

“Provided it does not have consequences for public health a person has the right to make even the poorest decisions in respect of their own health. But where the state, either directly or through local government, employs public health interventions, the right is not engaged. Were it otherwise, the individual's right to refuse would become the individual's right to decide outcomes for others. It would give any person a right of veto over public health measures which it is not only the right but often the responsibility of local authorities to deliver.”

In practice, we all have to take personal responsibility when democratic decisions don't go our way. Freedom of choice is not a valid argument to ignore the results of a referendum, a general election or prevent a democratically supported social policy like secular education or free hospitals. If we don't like free hospitals, we can take out health insurance. If we don't like secular schools, we can send our kids to private schools.

If we really object to water fluoridation (or chlorination), we can purchase the appropriate tap filter. That solution is a lot cheaper than health insurance or school fees. Experience from questioning opponents of water fluoridation suggests that they already use water filters or different water sources.

Does fluoridation work?

Many research studies show that it does, and new scientific reports are being regularly published. Just this year I have seen the results of studies from Australia and Korea which show that water fluoridation is beneficial. The data for New Zealand children show that their dental health is better in fluoridated areas than in non-fluoridated areas. Figure 2 compares average data for all of New Zealand over the last ten years.

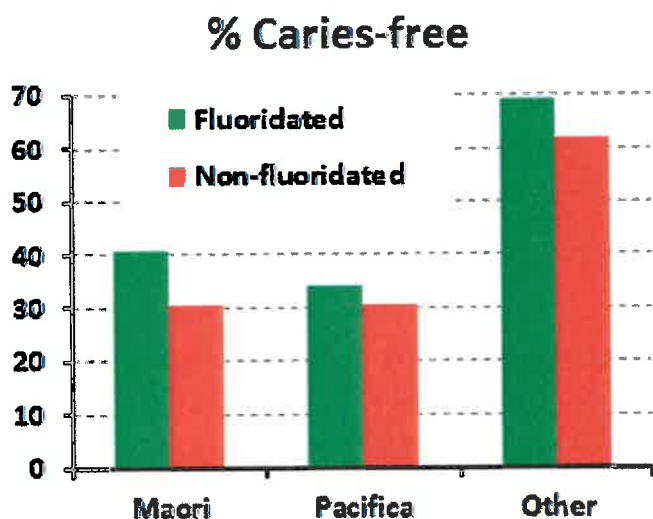


Figure 2: Figure 2: % 5-year-old children free of tooth decay for different ethnic groups. Average 2004-2014.

Beware of cherry-picking! It is possible to select data to confirm any bias. For example, comparing data for children in unfluoridated areas of Christchurch and Nelson-Marlborough with children in fluoridated areas of Auckland and Counties-Manukau is deceptive. Pacific Island children, who have a higher prevalence of tooth decay than other children, are concentrated in the fluoridated areas of Auckland and Counties-Manukau. Comparison of the data from different regions is not justified unless ethnic differences

are taken into account. Similarly, opponents can cherry-pick different time data or different regions to support their claims. We need to look at those claims critically and intelligently.

Community water fluoridation is known to be safe and effective. It is also cost effective – saving a lot more in dental treatment costs than the cost of fluoridation itself. The fluoridating chemicals used are not industrial waste, and their quality is ensured by strict regulation. In practice, contamination from natural water sources themselves is usually a more significant problem. Description of fluoridation as a medicine is not correct and freedom of choice is not violated as opponents have alternatives.

Note: Dr Perrott writes regularly on fluoride issues at the Open Parachute blog, which welcomes discussion. You can find his fluoride articles at <https://openparachute.wordpress.com/fluoridation/>

See also the Making Sense of Fluoride website (<http://msof.nz/>) and the Facebook page (<https://www.facebook.com/fluoridewater/>) for more information and discussion.

Submitted on Monday, 9 May 2016 - 2:13pm Submitted by anonymous user: [210.246.57.171]

Submitted values are:

--Submitter Details--

Name: Katie Abbott

Organisation: Friends of O'Connor's Bush Greytown

Email Address: friendsofthebush@gmail.com

--Submission Hearings--

Do you want to speak to your submission? No

Speaking preference:

--Sewerage--

How would you like to see the sewerage upgrade funded:

--Roading--

Are there any streets or roads in the district you think the speed limit should be reviewed?

--Water Supply--

If water supply revenue is in excess should we:

--Cycle Strategy--

Do you support the draft Cycle Strategy?

If not what changes would you like to see?

--Which aspects of the Cycle Strategy are most important to you?--

Please rank from 1-5 with 1 being the most important:

- Urban cycling (safety and marking routes):

- Urban amenity (cycling parks, racks and support):

- Development of linkages (routes between destinations e.g.

Featherston to Martinborough/Greytown):

- Traffic safety (as most cycling is on road a concentration of safer roads for cycling):

- Tourism and development (cycle races and events and tourism trails e.g. vineyards):

Are there any other cycle ways or physical works you would like to see considered in the cycle strategy future works plan?

--Pensioner (Community) Housing--

How would you like to see SWDC pensioner housing managed in the future?

--Fees and Charges--

Do you support the draft fees and charges?

If not, why?

--Additional Comment--

If you would like to comment or propose something different now is your chance:

The Friends of O'Connor's Bush group would like to respectfully request to the SWDC that the council continue to support the maintenance works for O'Connors Bush (formerly known as Friends of the Park) in the Soldiers Memorial Park Greytown at the budgeted amount of \$1800 per annum, as per our annual entitlement in previous years.

We are still working towards eradicating non-native species and have a number of trees that we would like to be removed as part of scheduled works. We would like to see SWDC and CITYCARE continue to maintain the pest control bait stations on a regular basis as an ongoing work order. We would like to continue to maintain the weed control programme either by SWDC contractors or other. We would like to request the installation of a gate/style at the western end of the path through O'Connor's Bush as the metal chain presently there is making it difficult for some members of the public to access the walkway. We would also like to request a rubbish bin be situated next to the Jack Bull Memorial seat on the bush walkway, as we have been experiencing high litter levels since the seat was installed.

We continue to work with community board and greytown kindergarten as stakeholders and continue to support Arbor Day celebrations. We would also like to know if the Soldiers Memorial Park Reserve Management Plan review has been progressed as we are keen to participate as a park user. We support the Greytown Tree Advisory Group submission for the review of the schedule of notable trees in the current schedule of natural and historic heritage sites in the Combined District Plan as part of the annual plan scheduled works.

Thank you for your continued support of the natural heritage of the Greytown Ward.

Upload submission:

Upload additional information:

The results of this submission may be viewed at:

<http://www.swdc.govt.nz/node/736/submission/596>

Submitted on Monday, 9 May 2016 - 2:41pm Submitted by anonymous user: [210.246.57.171]

Submitted values are:

--Submitter Details--

Name: katie abbott and jeremy partridge
 Organisation: greytown tree advisory group
 Email Address: friendsofthebush@gmail.com

--Submission Hearings--

Do you want to speak to your submission? Yes
 Speaking preference: May 25th pm

--Sewerage--

How would you like to see the sewerage upgrade funded:

--Roading--

Are there any streets or roads in the district you think the speed limit should be reviewed?

--Water Supply--

If water supply revenue is in excess should we:

--Cycle Strategy--

Do you support the draft Cycle Strategy?
 If not what changes would you like to see?

--Which aspects of the Cycle Strategy are most important to you?--

Please rank from 1-5 with 1 being the most important:

- Urban cycling (safety and marking routes):
- Urban amenity (cycling parks, racks and support):
- Development of linkages (routes between destinations e.g. Featherston to Martinborough/Greytown):
- Traffic safety (as most cycling is on road a concentration of safer roads for cycling):
- Tourism and development (cycle races and events and tourism trails e.g. vineyards):

Are there any other cycle ways or physical works you would like to see considered in the cycle strategy future works plan?

--Pensioner (Community) Housing--

How would you like to see SWDC pensioner housing managed in the future?

--Fees and Charges--

Do you support the draft fees and charges?

If not, why?

--Additional Comment--

If you would like to comment or propose something different now is your chance:

The convenors on behalf of the Greytown Tree Advisory Group would like to request the review, adding and updating of the schedule of Greytown notable trees in the current schedule of natural and historic heritage sites in the Combined District Plan as part of the annual plan scheduled works.

We would like to request funds towards engaging a professional arborist to review and complete the assessment of greytown trees work (begun in 1997) for adding to the notable tree schedule.

Please update us on the next planned CDP review.

We would also request that the SDWC resolve to adopt the NZAA guidelines on best practice protective tree fencing to ensure that all the notable trees on the schedule are protected in the future when involved with any development and construction works.

And adequately protected in any future building consents.

Thank you for your continued support of the natural heritage of the Greytown Ward.

Upload submission:

Upload additional information:

<http://www.swdc.govt.nz/sites/default/files/webform/The%20Greytown%20Tree%20Advisory%20Group%20mission%20statement%202022.3.16.docx>

The results of this submission may be viewed at:

<http://www.swdc.govt.nz/node/736/submission/597>

The Greytown Tree Advisory Group (TAG)

Mission: We will work with the Greytown Community Board to enhance and protect the quality, liveability and natural heritage of the Greytown ward

Purpose:

The Greytown Tree Advisory Group aims to help increase public awareness about the importance contribution of trees to Greytown's history and heritage.

The goals of the group are to:

- Recognise and recommend individual heritage trees or groups of trees of significance, for inclusion in the Wairarapa Combined District Plan schedule of natural and historic heritage sites
- To educate the community about the benefits and significance of our trees
- To retain and protect these trees as part of Greytown's heritage
- To advocate for the protection of Greytown's trees

Activities of the group include:

- Advice to the Greytown Community Board about matters pertaining to all significant trees of Greytown
- Tree planting
- Public education about the importance of trees
- Arbor Day planning
- Maintain a list of trees which could be recommended for protection under the Combined District Plan
- Liaise with interested groups and stakeholders
- Maintain a partnership with SWDC
- Assisting with the management plans of Greytown's parks and reserves

Membership composition 2016

Jeremy Partridge, Convenor
 Katie Abbott, Convenor
 Christine Stevenson, GCB rep
 Alisoun Werry
 Mike Gray
 Peggy Duncan
 Frank Minehan
 A Greytown Heritage Trust rep